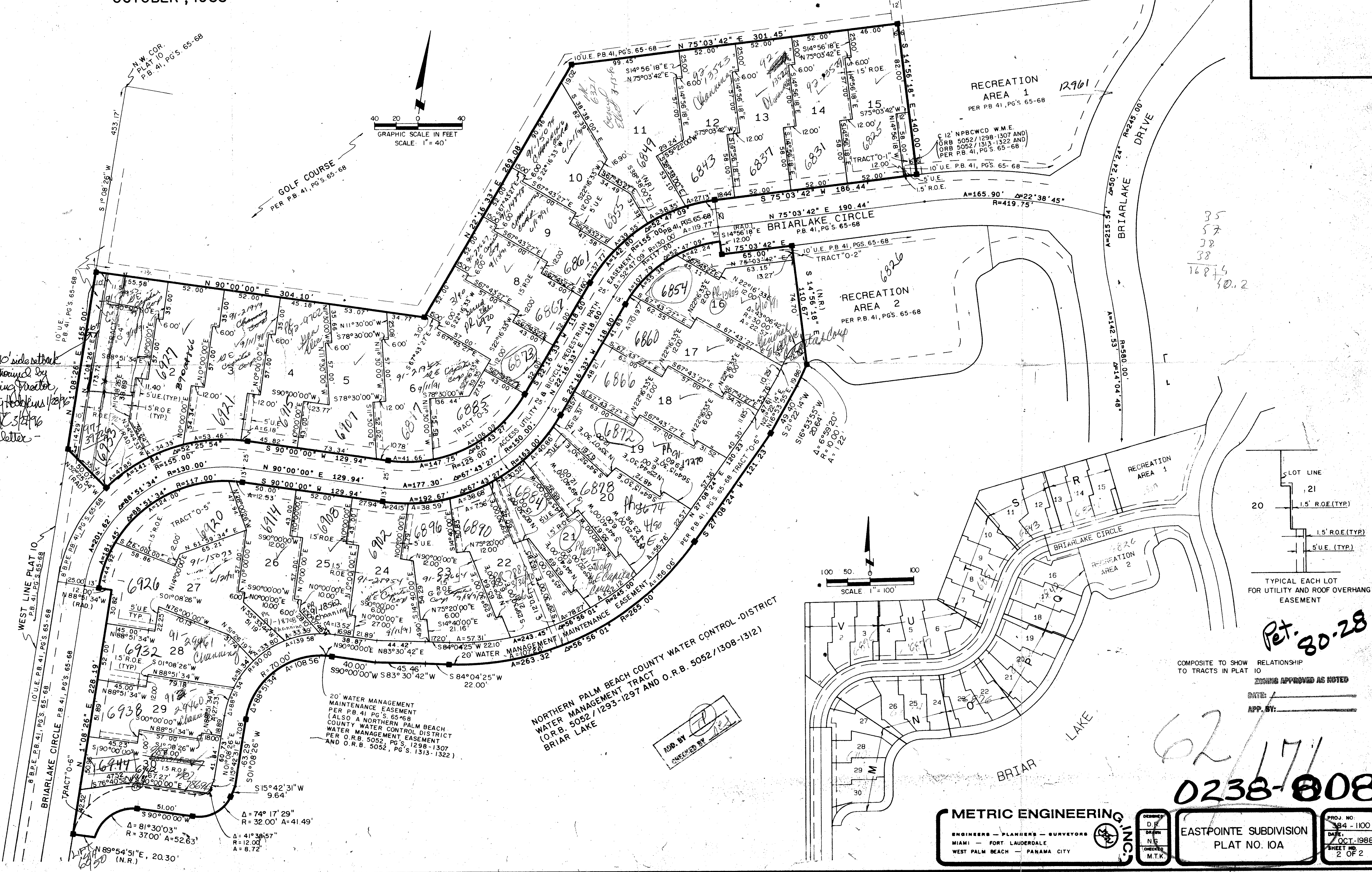


PLAT NO. 10A EASTPOINTE SUBDIVISION (A PLANNED UNIT DEVELOPMENT)

238-008

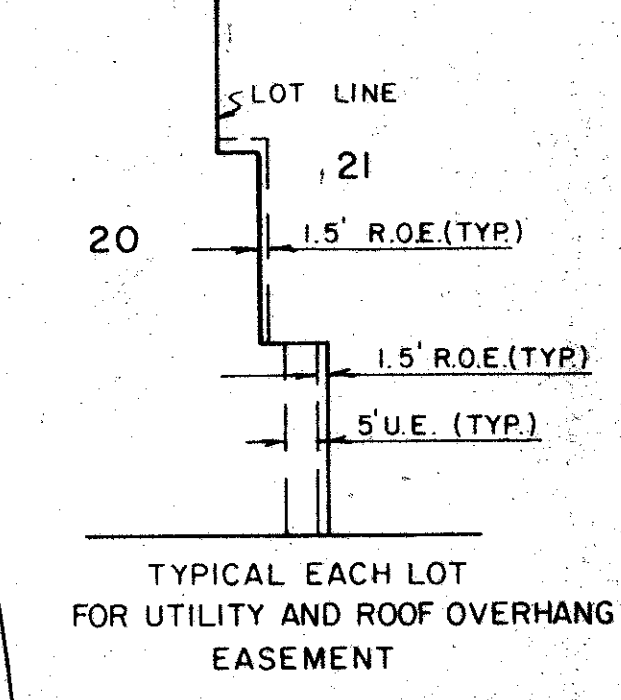
171

BEING A PLAT IN SECTION 34, TOWNSHIP 41 SOUTH, RANGE 42 EAST AND BEING A REPLAT OF TRACTS M, N, O, P, Q, R, S, T, U, AND V OF PLAT NO. 10 EASTPOINTE SUBDIVISION AS RECORDED IN PLAT BOOK 41, PAGES 65-68, PUBLIC RECORDS OF PALM BEACH, FLORIDA
OCTOBER, 1988
SHEET 2 OF 2



10' side setback
outlined by
Zoning Director,
Harty Hopkins
R/C 3/27/86
See letter

35
57
38
38
168.45
30.2



Ret. 80-28

COMPOSITE TO SHOW RELATIONSHIP TO TRACTS IN PLAT 10
ZONING APPROVED AS NOTED
DATE: _____
APP. BY: _____

0238-008

SUBDIVISION - EASTPOINTE SUBDIVISION
BOOK G-2 PAGE 171
FLOOD MAP # 115 B
FLOOD ZONE B
CLAND # 344/42 ZONING RE
SE. 80-82 ZIP CODE 33418
PUD NAME EAST POINTE PUD TAZ 778

PREPARED BY
CHECKED BY

METRIC ENGINEERING INC.
ENGINEERS - PLANNERS - SURVEYORS
MIAMI - FORT LAUDERDALE
WEST PALM BEACH - PANAMA CITY

EASTPOINTE SUBDIVISION
PLAT NO. 10A

PROJ. NO. 184-1100
DATE: OCT. 1988
SHEET NO. 2 OF 2